

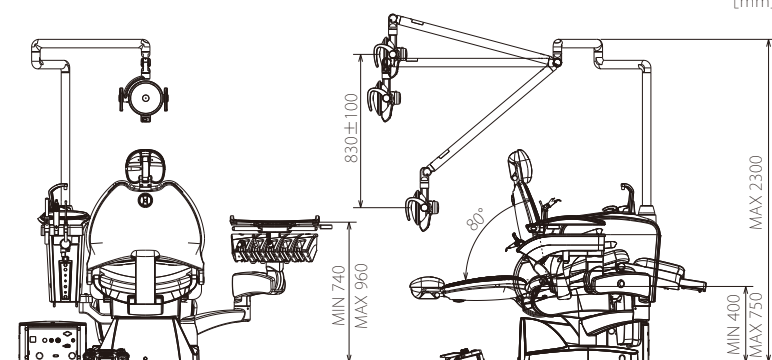
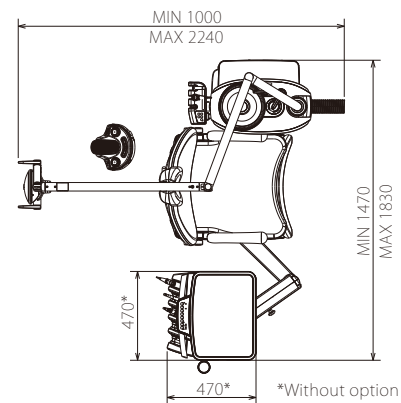
Dimensions



Folding type



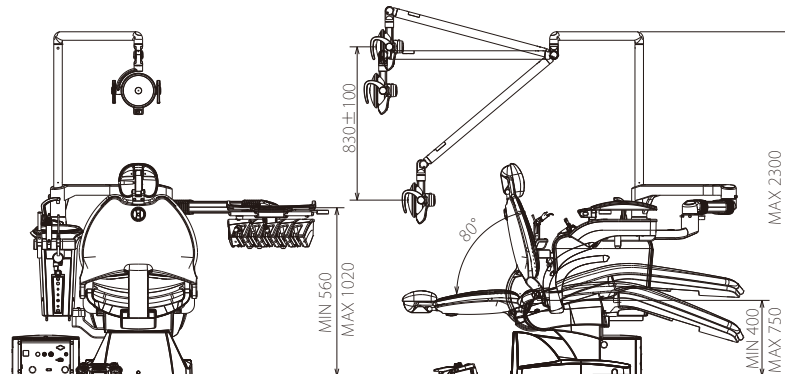
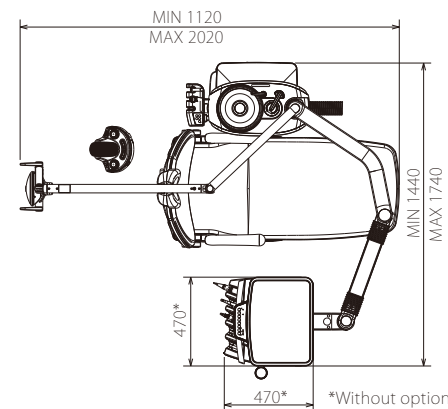
Type 1
Base mount



Contour type



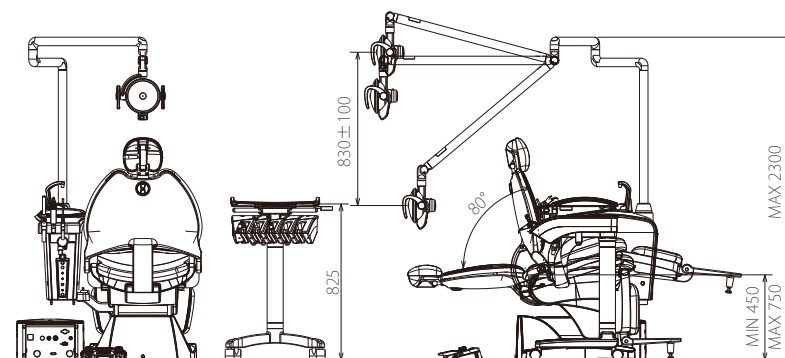
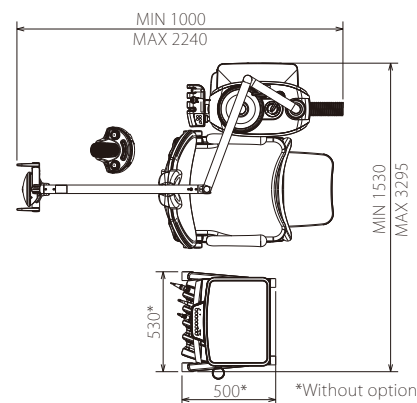
Type 2
Over arm



Folding type
with platform



Type 3
Cart



© THE YOSHIDA DENTAL MFG. CO., LTD.

Distributor

YOSHIDA

THE YOSHIDA DENTAL MFG. CO., LTD.
Address 1-3-6 Kotobashi, Sumida-ku Tokyo, Japan ZIP 130-8516



[www.facebook.com/
YoshidaDentalManufacturing](https://www.facebook.com/YoshidaDentalManufacturing)



www.yoshida-net.co.jp/en

Fifth Edition

YOSHIDA



The New Standard
in Patient Comfort



eyecia II

More comfort. Better care.

EYECIA II is the quietest, most comfortable chair we've ever designed.

So even the most fearful patients can sit back and relax and doctors can provide superior care.

EYECIA II



Contour type

*Image is optional dental chair.

Designed with patients and doctors in mind.

EYECIA II is ergonomically designed to maximize patient comfort and relaxation. For doctors, we've simplified the controls, making key functions easier to find and use.



*Image is optional dental chair.



Folding type

*Image is optional dental chair.

Serenity



Premium Comfort

Our optional Takumi seat is like a custom-made lounge chair with deep, supportive cushioning.

Color options

Standard



Soft, silky upholstery that's easy to clean and makes patients feel like they're lying on a soft blanket.



Champagne white



Blue metallic



Green metallic



Dark blue



Bordeaux metallic



Black metallic

Takumi seat

optional



Exceptionally soft upholstery, crafted by hand. This optional chair is like a luxury sofa. It's so comfortable, your patients will remain at ease for the entire treatment.



Rich black



Vanilla white



French beige



L-2543



L-8146



Chocolat brown



L-2532



Bourgogne red



Grant blue



L-2533



L-2538



British green



L-8149

Smooth Start & Stop Technology

The chair starts and stops so smoothly and slowly, patients hardly feel the chair moving at all.

Silent Movement System

No jolts or mechanical sounds. The chair's motor is whisper-quiet, so patients don't hear a thing.



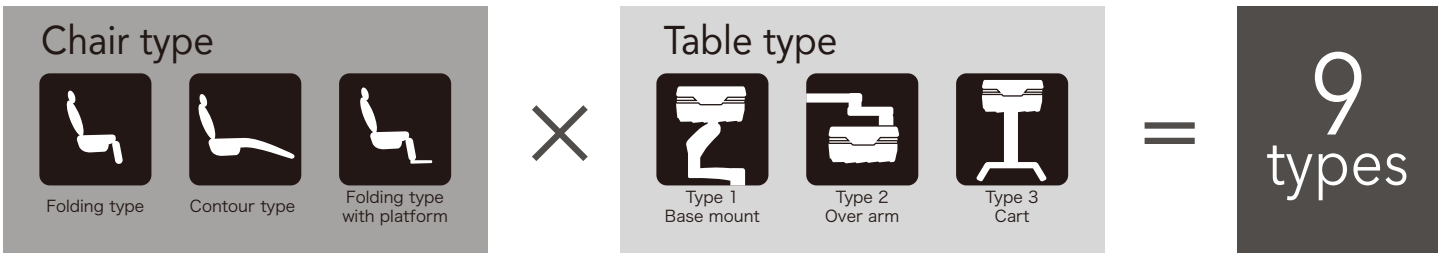
Simplicity

Intuitive control panel simplifies operation

A smarter layout of controls enables doctors to concentrate more on the procedure and on conversations with patients.



A total of 9 different styles are available by a combination of 3 chair types and 3 table types. The best combination can be selected to suit your practice.



Chair type



Folding type

Allows the patient to be seated from a standing position.



Contour type

Designed to fit patient' s body contour and provides comfortable seating experience.

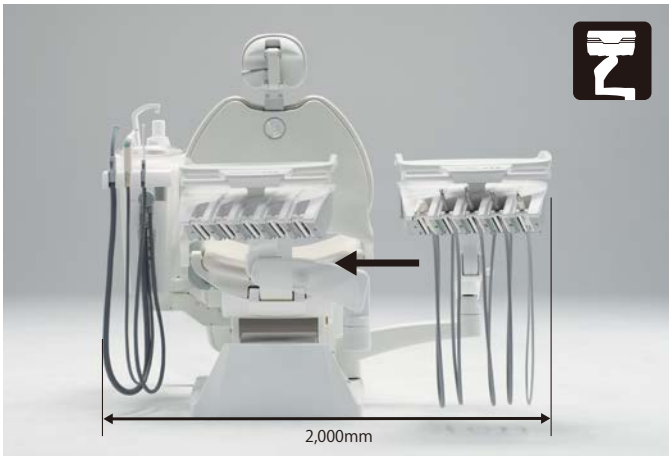


Folding type with platform

Especially optimal for small children and elderly patients

Table type

*Image is optional dental chair.



Type 1 - Base mount

Smooth patient ingress and various treatment position is possible. With "Type 1 – Base mount", the table can be set behind the chair for smooth patient ingress thanks to the extended movable range of the table.



Type 2 - Over arm



Type 3 - Cart



Efficiency

The most frequently used functions are all located on the front control panel. Individual instrument controls are located on the side for enhanced efficiency.



Easy Handling

The handles on both sides allow for easy repositioning of the table.



User-Friendly

The instrument holder is tilted at a 20-degree angle, improving accessibility and protecting doctors' hands from other instruments.

Hygienic

Removable Spittoon Bowl

Completely removable glass bowl is easy to clean, giving your patients peace of mind.



Utility

Tools for Every Need

A wide selection of optional devices and instruments are available to meet a variety of clinical needs.



YOSHIDA INSTRUMENTS

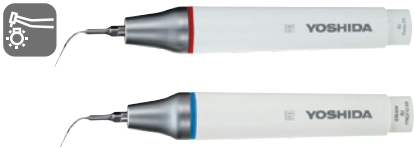
※ WITH OPTICAL LIGHT



V type syringe



Multiway syringe



Ultrasonic scaler

AIR TURBINE



Royalroad SDC1



Royalroad SDC1mini



Super load 640BP-LUX



Super load 640BQP



High torque 635BP-LUX



High torque 635BQP

MICROMOTOR HANDPIECE



SV40MI



SV40SI

QUICK JOINT



LX503(LED)

MICROMOTOR



40C



3L

UNIT



Water bottle



Anti-tilt cup holder

FILM VIEWER



Panoramic film viewer

DISPLAY ARM



Display arm&monitor

FOOT CONTROLLER



Step-in type



Sliding foot controller



Automatic Spittoon Flush & Cup Filler

Convenient auto-control system for spittoon flush and cup filler - equipped as a standard.



Removable Table Tray

Removable waterproof table tray fits perfectly into the table to keep liquids out.



Touchelss Sensor Operating Light

Natural brightness and a shadow-free light field offer optimal vision. Staff can turn the light on/off hygienically without touching it.